

# BOARD INSIGHT REPORT

By: Shanna Lee

Fall 2020 – Fall 2021

# How to Use this Report

## About this Report

This report provides clear, actionable insight into your students' academic achievement and growth, as measured by Point Arena Schools Data Analysis Administrator using the MAP® Growth assessments reports. Report sections address specific questions to identify areas of strength and areas for improvement. Initial sections provide high-level snapshots, while later sections provide more granular detail. This report serves as a resource for communicating the performance of your students to important stakeholders and for informing decisions about resource allocation and program improvement.

## Glossary

**Achievement:** is Median status percentile (MSP) or the middle value when a group of students are rank ordered from lowest to highest status percentile. A group whose MSP value is 50 showed "typical" achievement at that time, relative to NWEA norms.

**Growth:** change in achievement over time as measured by the MAP Growth assessment. A minimum of two tests are required to achieve a baseline and then a growth. Growth is measured by the Median growth percentile (MGP) or the middle value when a group of students are rank ordered from lowest to highest growth percentile. A group whose MGP value is 50 showed "typical" improvement over time, relative to NWEATM norms.

**Projected college readiness:** a prediction about whether students are on track for college readiness, based on their observed MAP Growth score and the MAP Growth college readiness benchmark study.

**Projected proficiency:** a prediction about students' proficiency status on their state summative test (i.e., what proportion met/exceeded state proficiency standards), based on their observed MAP Growth scores and the relevant NWEA linking study.

**Status:** achievement at a single point in time as measured by the MAP Growth assessment.

**Student growth percentile:** expresses how a student's growth compares to NWEA national norms. For example, a student with 75th percentile growth showed improvement over time that was better than 75% of similar students across the United States.

**Student status percentile:** expresses how a student's achievement at a single point in time compared to NWEA national norms. For example, a student with 50<sup>th</sup> percentile status performed precisely at the mid-point of similar students across the United States

## Effectiveness Levels

This report uses the following levels to describe the achievement and growth of your students.

### GROWTH AND STATUS PERCENTILE VALUES

	≥	<
Substantially above	78.5	100
Moderately above	69.5	78.5
Slightly above	57.5	69.5
About average	42.5	57.5
Slightly below	30.5	42.5
Moderately below	21.5	30.5
Substantially below	0	21.5

Note: these levels are from generally accepted statistical thresholds. These colors are used throughout the report to convey effectiveness levels.

## Methodology

This report uses median status and growth percentiles to describe the performance of various groups of students, relative to NWEA norms. Refer to the "NWEA 2015 MAP Norms for Student and School Achievement Status and Growth" report for more information about these percentiles and the combinations of subjects and grades for which norms are available.

# Table of Contents

District Demographics	4
Executive Summary Highlights	5
How are Districts Students Doing?	6
How are Schools Achievement and Growth?	7
Which Subjects are Strongest?	8
Are We Proficient and College Ready?	9
Is Our Growth Strong Over Time?	10
How is Achievement by Grade and Subject?	11
How is Growth by Grade & Subject?	12
What about Ethnicity?	13
What about ELL	14
Conclusion	15

# District Demographics

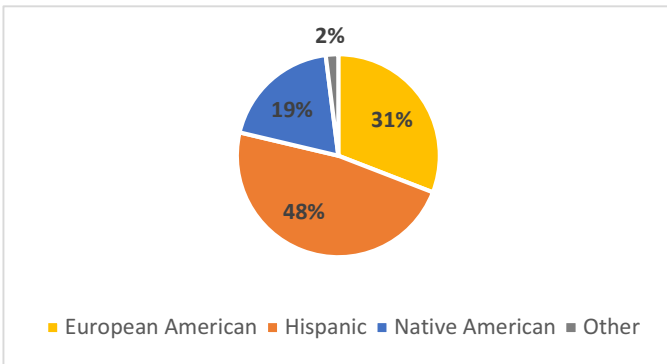
## DEMOGRAPHICS 2020-21

### STUDENTS TESTED:

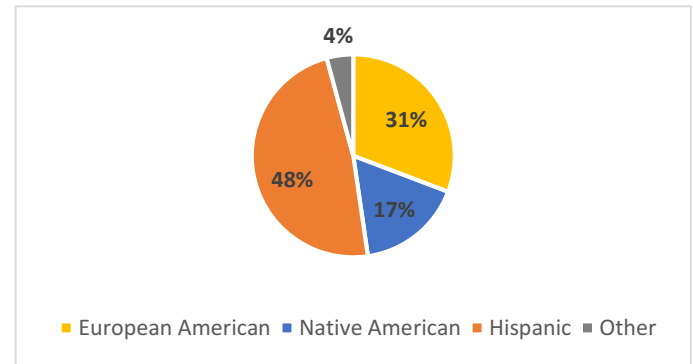
	Class Size 2019	Number Tested 2019		Class Size 2020	Number Tested F2020		Number Tested W2021		Number Tested S2021		Number Tested F21	
		Reading	Math		Reading	Math	Reading	Math	Reading	Math	Reading	Math
K	20	NA	NA	23	NA	NA	NA	NA	NA	NA	NA	NA
1	25	NA	NA	23	NA	NA	NA	NA	NA	NA	NA	NA
2	20	NA	NA	29	NA	NA	NA	NA	NA	NA	NA	NA
3	18	NA	NA	20	NA	NA	NA	NA	18	17	23	23
4	24	14	15	20	14	15	14	17	18	19	16	17
5	18	19	21	27	19	21	25	26	26	25	21	21
6	20	8	12	24	8	12	21	21	21	20	19	19
7	27	15	14	22	15	14	19	19	18	17	18	24
8	30	15	21	28	15	21	23	23	26	25	18	19
9	42	38	38	39	38	38	34	35	31	31	33	33
10	37	30	33	40	30	33	34	34	34	33	36	37
11	21	27	27	31	27	27	29	29	33	33	30	30
12	31	4	4	18	4	4	NA	NA	NA	NA	33	32

\*AE tested after 6 weeks instruction PA tested with no weeks of instruction. Normative data compares like weeks.

PERCENT OF TEST SCORES BY ETHNICITY S2021



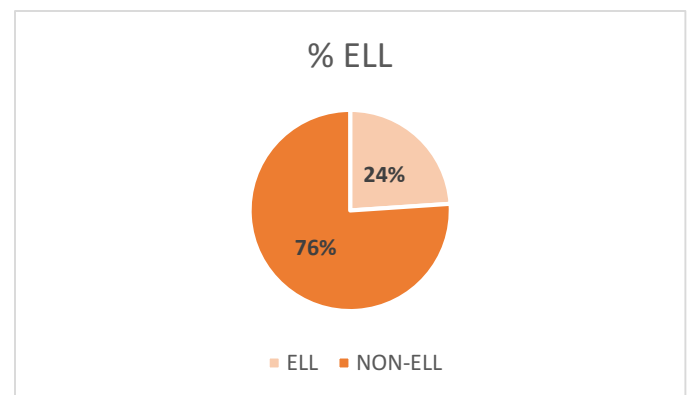
PERCENT OF TEST SCORES BY ETHNICITY F2021



Note: percentages above are of tests taken – not student populations

### ENGLISH LANGUAGE LEARNERS

- 24% of District students 3<sup>rd</sup>-12<sup>th</sup> grades are designated as English Learners.
- 94% of Districts EL students 3<sup>rd</sup>-12<sup>th</sup> grades were tested.
- The percent of Districts ELL students tested increased from 66% to 94%.



# Executive Summary Highlights

**Districts median student achievement is 34<sup>th</sup> percentile and districts median student growth is 41<sup>st</sup> percentile.**

Achievement is slightly below average and growth slightly below average

The median achievement scores of all assessments given in Fall of 2021 equaled the 34<sup>th</sup> percentile. One subject was above the district median: reading. One subject was below the district median: mathematics.

For growth, the median score equaled the 41<sup>st</sup> percentile, which is slightly below average. One subject was above district median: Reading. One subject was below district median: math.

**25% of students should meet state standards in at least one subject.**

13% of students are on track to meet college readiness in at least one subject.

MAP Growth results predict that 25% of students will meet proficiency standards on state summative tests in at least one subject. 34% will likely meet standards in ELA and 17% in math. 6% of students are predicted to meet standards in both subjects. 29% of students are predicted to not meet either standard.

\*4<sup>th</sup>-8<sup>th</sup> and 11<sup>th</sup> Grades

13% are demonstrating achievement that is on track to meet MAP Growth college readiness benchmarks in at least one subject. 19% are projected to be college ready in ELA and 7% in math. 2% are likely on track in both reading and math. 37% are not meeting these benchmarks in either subject.

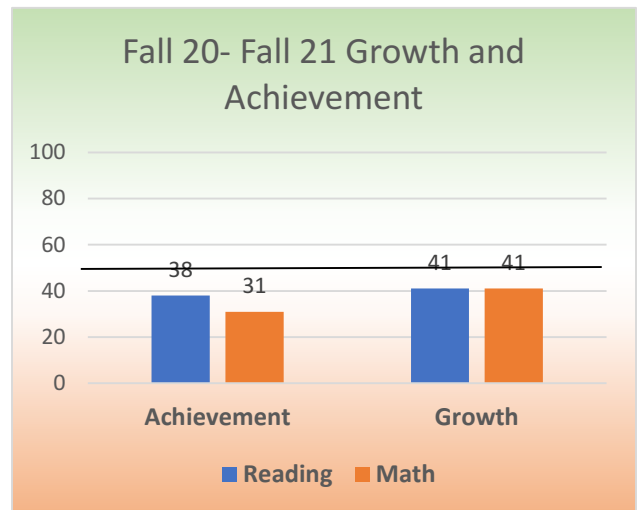
\*5<sup>th</sup>-10<sup>th</sup> Grades ACT

**The districts 2 term growth was about average**

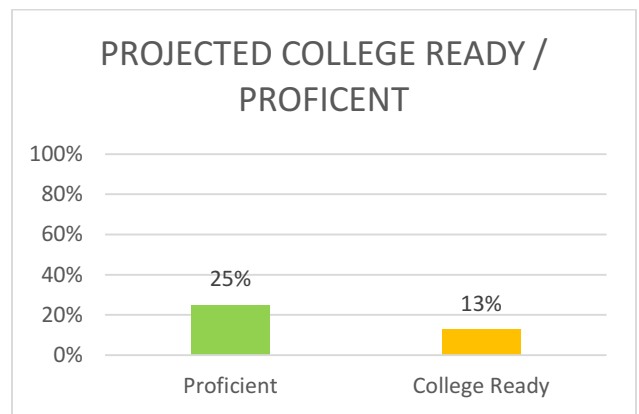
Median growth was 41 for the term Fall 2020 to Fall 2021

Median growth was 41<sup>st</sup> percentile in math. Reading growth median was 41<sup>st</sup> percentile. Average growth over the two terms was 45<sup>th</sup> percentile which is about average.

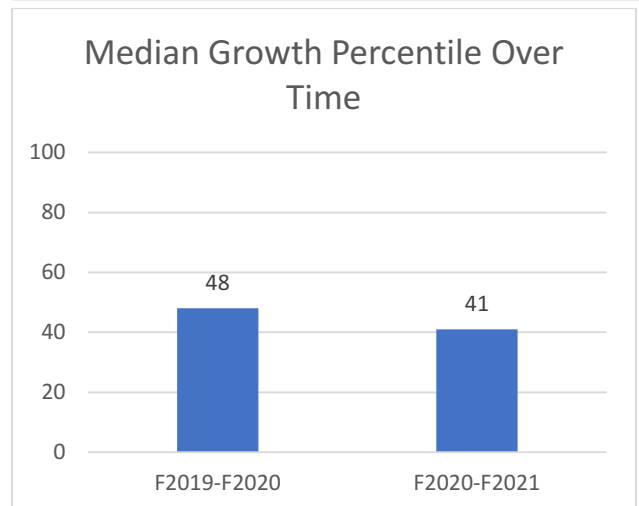
## ACHIEVEMENT AND GROWTH



## PROFICIENCY AND COLLEGE READINESS IN AT LEAST ONE SUBJECT



## DISTRICTS GROWTH



# How are District Students Doing?

Overall achievement of district students is slightly below average.

**Median achievement is 34<sup>th</sup> percentile; median growth is 41<sup>th</sup> percentile**

District students demonstrated a median achievement level at the 34<sup>th</sup> percentile on Spring 2021 MAP Growth assessments. This means that one half of all the students' MAP Growth scores (across all subjects measured) were above the 34<sup>th</sup> percentile. Looking at growth from Fall 2020 to Fall 2021, the median growth percentile for district students was 41<sup>st</sup> percentile versus a national median of 50. This means that district students' scores grew at less than the same rate as typical students.

**Top-Quartile Students: a Smaller Proportion than is Typical, with Above Average Growth**

11% of district students' scores are in the top achievement quartile when all subjects measured are combined, compared to 25% nationally. Approximately 4% of districts students' scores were in the top achievement decile in Fall 2021 compared to 10% nationally. Top Quartile students grew at the 62<sup>nd</sup> mean percentile which is slightly above average compared to the national norm. 38% of students have at least one test in the top growth quartile.

**Middle-Two-Quartiles Students: a Slightly larger proportion, with Growth Approximately Average to the Norm**

Nationally, about 50% of scores fell within the two middle quartiles versus 55% of district scores. This group grew at the 46<sup>th</sup> mean percentile, which is average. 55% of students were in the middle two growth quartiles for at least one test

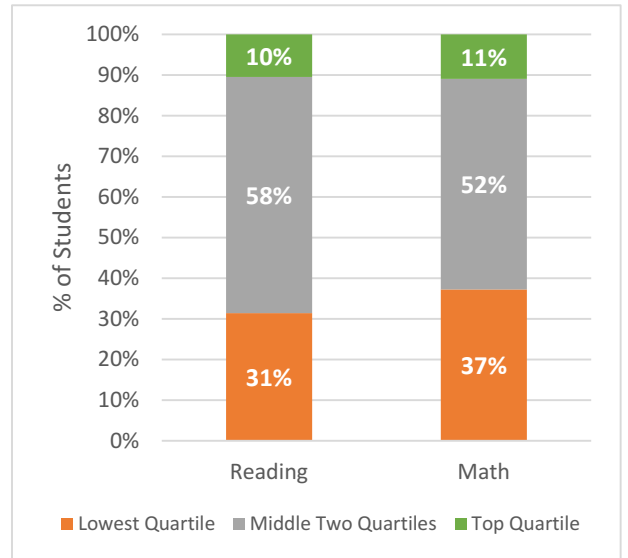
**Lowest-Quartile Students: a Larger Proportion than is Typical, with Growth Lower than the Norm**

Some 34% of district students' scores showed lowest (or bottom) quartile achievement in at least one test, which is more than the 25% that is typical for the country. These students' scores show smaller growth percentile as similar students, as their mean growth percentile was at the 38<sup>th</sup> percentile from Fall of 2020 to Fall of 2021. About 22% of districts students demonstrated bottom decile achievement, compared to 10% nationally. 45% of students were in the lowest quartile.

**A larger proportion than normal is underachieving and lower growing, while a smaller proportion than normal is performing at a high level and growing at a high level. Mean growth for each quartile is up.**

*\*from 2020 pre-Covid Norms*

## HOW MANY DISTRICT STUDENTS ARE ABOVE OR BELOW AVERAGE ACHIEVEMENT?



## STUDENTS GROWING EQUALLY?

Mean Growth Percentiles

	Lowest Quartile	Middle Two Quartiles	Top Quartile
Reading	38	46	70
Math	39	45	53
Total	38 ↑	46 ↑	62 ↑

# How are Schools Achievement & Growth?

**None of districts schools (0/2) had high achievement and high Growth**

**None of districts schools had low achievement and low growth**

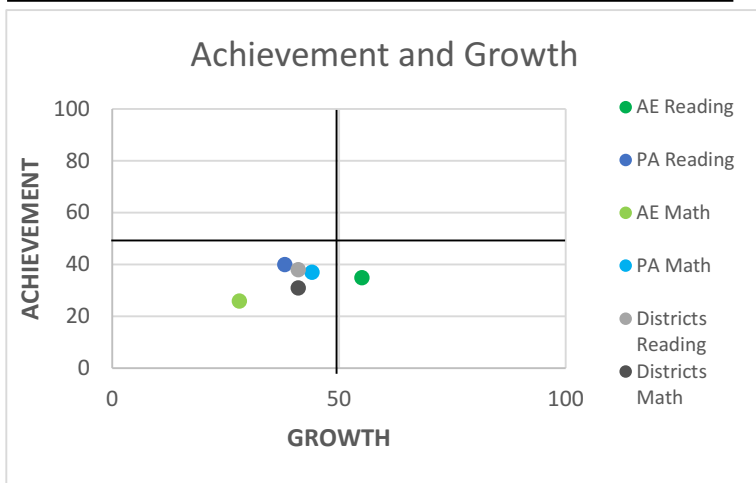
Districts schools' median Achievement Percentiles ranged from the 30<sup>th</sup> to the 43<sup>rd</sup> percentile. Neither districts demonstrated achievement equal to or above the 50<sup>th</sup> percentile.

The Median growth percentile of district schools ranged from 40<sup>th</sup> to 44<sup>th</sup> percentile. Neither of the districts produced median growth percentile equal to or above the 50<sup>th</sup> percentile.

The following shows the growth and achievement medians by school and subject.

	Achievement	Growth
<b>Average achievement/Slightly below average growth</b>		
Point Arena High School	43↑	40↑
<b>Moderately below average achievement/Average growth</b>		
Arena Elementary School	30↑	44↓

## ACHIEVEMENT AND GROWTH BY SCHOOL



## School – Level Detailed Scores

Median achievement and growth percentiles by school and subject

School	Reading		Math	
	Growth	Achievement	Growth	Achievement
AE	55↓	35↑	28↓	26↑
PA	38↑	40↓	44↑	37↑